

*speedo*<sup>®</sup>



2021



*speedo*

HALI  
FLICKINGER

OUR MOST COMPRESSIVE, FLEXIBLE, TECHNICAL SUIT

# LZR PURE INTENT

Female specific\*

## ► Increased Comfort + Mobility

Comfortable precision straps with a high power elastic base increase flexibility, stretch and power return while keeping a low profile

***“THE COMPRESSION IS  
PERFECT, AND I FEEL LIKE  
THE SUIT IS REALLY  
WORKING WITH MY KICKS.”***

**KATHLEEN BAKER**  
2X OLYMPIC MEDALIST  
3X WORLD CHAMPION

Male specific\*

## ► Water-Tight Fit

Premium lightweight, high-waist microfiber waistband keeps water out throughout the race

***“IT WORKS WITH YOUR  
STROKE. YOU’RE ONE  
WITH THE SUIT.”***

**CAELEB DRESSEL**  
2X OLYMPIC CHAMPION  
7X WORLD CHAMPION



**PURE INTENT**  
73% Nylon/27% Lycra Spandex



Open Back  
Kneeskin



Closed Back  
Kneeskin



Jammer



High-Waist Jammer

**OPEN BACK KNEESKIN**

**Adult:** SP7724000      **Sizes:** 20, 22, 24, 25, 26, 28, 30      **MSRP:** \$599

**Colors:** Black/Rose Gold 003



**CLOSED BACK KNEESKIN**

**Adult:** SP7724001      **Sizes:** 20, 22, 24, 25, 26, 28, 30      **MSRP:** \$599

**Colors:** Black/Rose Gold 003



**JAMMER**

**Adult:** SP7725000      **Sizes:** 20, 22, 24, 25, 26, 28, 30      **MSRP:** \$399

**Colors:** Black/Rose Gold 003



**HIGH-WAIST JAMMER**

**Adult:** SP7725001      **Sizes:** 20, 22, 24, 25, 26, 28, 30      **MSRP:** \$399

**Colors:** Black/Rose Gold 003





OUR MOST COMPRESSIVE, FLEXIBLE, TECHNICAL SUIT

# LZR PURE VALOR

Female specific\*

► **Increased Comfort  
+ Durability**

Updated silhouette with refined  
neck and arm openings

***“IF YOU WANT TO BE THE  
FASTEST, YOU NEED TO BE  
WEARING THE FASTEST  
AND THE BEST.”***

**HALI FLICKINGER**  
OLYMPIAN  
WORLD CHAMPION

Male specific\*

► **Water-Tight Fit**

Premium lightweight, high-waist  
microfiber waistband keeps  
water out throughout the race

***“THE VALOR SIMPLY IS FAST!  
IT HAS SMART COMPRESSION  
THAT LEAVES MY LEGS  
FEELING FRESH AT THE END  
OF LONG RACES..”***

**RYAN MURPHY**  
3X OLYMPIC CHAMPION  
6X WORLD CHAMPION



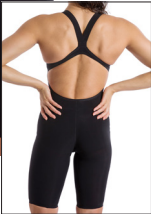


PURE VALOR

65% Nylon/35% Lycra Spandex



Open Back  
Kneeskin



Closed Back  
Kneeskin



Jammer



High-Waist Jammer

OPEN BACK KNEESKIN

Adult: SP7724002

Sizes: 20, 22, 23, 24, 25, 26, 28, 30

MSRP: \$499

Colors: Speedo Black 001



CLOSED BACK KNEESKIN

Adult: SP7724003

Sizes: 20, 22, 23, 24, 25, 26, 28, 30

MSRP: \$499

Colors: Speedo Black 001



JAMMER

Adult: SP7725002

Sizes: 20, 22, 23, 24, 25, 26, 28, 30

MSRP: \$365

Colors: Speedo Black 001



HIGH-WAIST JAMMER

Adult: SP7725003

Sizes: 20, 22, 23, 24, 25, 26, 28, 30

MSRP: \$365

Colors: Speedo Black 001



# SPEEDO VANQUISHER

**PowerPlus** 79% Nylon, 21% Lycra Spandex

## KNEESKIN

**Adult:** SP7724903    **Sizes:** 16, 18, 20, 22, 24, 26, 28, 30, 32, 34, 36    **MSRP:** \$140

**Colors:** Speedo Black 001, Beautiful blue 400, Blazing Pink 661, Violet 511



## JAMMER

**Adult:** SP7725903    **Sizes:** 16, 18, 20, 22, 24, 26, 28, 30, 32, 34, 36    **MSRP:** \$100

**Colors:** Speedo Black 001, Beautiful blue 400, Blazing Pink 661, Violet 511



# ENDURANCE<sup>+</sup>®

Swimmers at every level can benefit from our exclusive Endurance+ fabric. It's designed to last 20 times longer than conventional swimwear fabric. Endurance+ resists sagging, bagging and fading—making it a great choice for practice and training.



## FABRIC TECHNOLOGY

50%

POLYESTER



50%

POLYESTER  
PBT



KYLIE MASSE



EMERGING FORCE

ENDURANCE+ 50% Polyester/50% PBT



FLYBACK

Adult: SP7719200      Sizes: 20, 22, 24, 26, 28, 30, 6/32, 8/34, 10/36, 12/38, 14/40      MSRP: \$84

Colors: Speedo Blue 431, Speedo Red 601, Speedo Green 320, Speedo Purple 502, Speedo Yellow 722, Speedo Orange 847, Red/White/Blue 985, Navy/Gold 419, Blue/Green 421



CROSSBACK

Adult: SP7719201      Sizes: 20, 22, 24, 26, 28, 30, 6/32, 8/34, 10/36, 12/38, 14/40      MSRP: \$84

Colors: Speedo Blue 431, Speedo Red 601, Speedo Green 320, Speedo Purple 502, Speedo Yellow 722, Speedo Orange 847, Red/White/Blue 985, Navy/Gold 419, Blue/Green 421



JAMMER

Adult: SP7705209      Sizes: 22, 24, 26, 28, 30, 32, 34, 36, 38      MSRP: \$54

Colors: Speedo Blue 431, Speedo Red 601, Speedo Green 320, Speedo Purple 502, Speedo Yellow 722, Speedo Orange 847, Red/White/Blue 985, Navy/Gold 419, Blue/Green 421



BRIEF

Adult: SP7705201      Sizes: 22, 24, 26, 28, 30, 32, 34, 36, 38      MSRP: \$44

Colors: Speedo Blue 431, Speedo Red 601, Speedo Green 320, Speedo Purple 502, Speedo Yellow 722, Speedo Orange 847, Red/White/Blue 985, Navy/Gold 419, Blue/Green 421



ENDURANCE+ SOLID

ENDURANCE+ 50% Polyester/50% PBT



FLYBACK TRAINING SUIT

Adult: SP819016  
Youth: SP819015

Sizes: 26, 28, 30, 6/32, 8/34, 10/36, 12/38, 14/40  
Sizes: 6/22, 8/24, 10/26, 12/28

MSRP: \$69  
MSRP: \$69

CORE

Colors: Speedo Black 001, Black/Blue 976, Black/Red 972, Black/Black 006, Black/Bright Green 989, Navy 412, Navy/Red 411, Navy/Blue 317, Speedo Blue 431, Dark Red 600, Speedo Navy 434



SOLID THIN STRAP

Adult: SP8191442

Sizes: 26, 28, 30, 6/32, 8/34, 10/36, 12/38, 14/40

MSRP: \$69

CORE

Colors: Speedo Black 001, Speedo Navy 434



SUPER PRO

Adult: SP819004  
Youth: SP819003

Sizes: 26, 28, 30, 6/32, 8/34, 10/36, 12/38, 14/40, 16/42, 18/44  
Sizes: 6/22, 8/24, 10/26, 12/28

MSRP: \$69  
MSRP: \$69

CORE

Colors: Speedo Black 001, Navy 412, Speedo Blue 431



# ENDURANCE+ SOLID

ENDURANCE+ 50% Polyester/50% PBT



Crossback



Jammer



Brief

## CROSSBACK

Adult: SP7192150

Sizes: 26, 28, 30, 6/32, 8/34, 10/36, 12/38, 14/40

MSRP: \$69

CORE

Colors: Speedo Black 001, Speedo Blue 400, Speedo Navy 501



## SOLID POLY JAMMER

Adult: SP805013/SP805014

Sizes: 22, 24, 26, 28, 30, 32, 34, 36, 38

MSRP: \$49

Colors: Speedo Black 001, Speedo Blue 431, Navy 412



## SOLID POLY BRIEF

Adult: SP805011/SP805012

Sizes: 22, 24, 26, 28, 30, 32, 34, 36, 38

MSRP: \$39

Colors: Speedo Black 001, Speedo Blue 431, Navy 412





# THE ONE

**ENDURANCE** 53% Polyester/47% PBT

**Features:** Very open | Low back



## THE ONE

**Adult:** SP7719050 **Sizes:** 24, 26, 28, 30, 6/32, 8/34, 10/36, 12/38, 14/40 **MSRP:** \$69

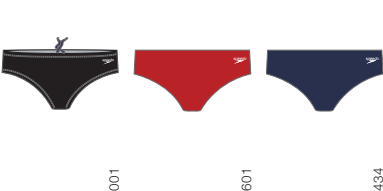
**Colors:** Speedo Black 001, Speedo Red 601, Speedo Blue 431, Speedo Navy 434



## BRIEF

**Adult:** SP7705922 **Sizes:** 26, 28, 30, 32, 34, 36, 38 **MSRP:** \$39

**Colors:** Speedo Black 001, Speedo Red 601, Speedo Navy 434



# PRO LT

**PRO LT** 82% Polyester/18% Spandex

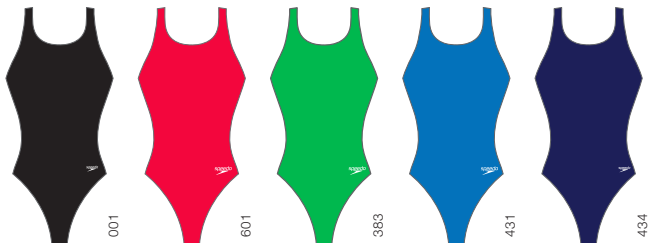
**Features:** Entry level dual meet suit | 6–8 week season



## SUPER PRO

**Adult:** SP8191481 **Sizes:** 26, 28, 30, 6/32, 8/34, 10/36, 12/38 **MSRP:** \$39.99  
**Youth:** SP8191480 **Sizes:** 4/20, 6/22, 8/24, 10/26, 12/28 **MSRP:** \$39.99

**Colors:** Speedo Black 001, Speedo Red 601, Hyper Green 383, Speedo Blue 431, Speedo Navy 434



## JAMMER

**Adult:** SP8051480 **Sizes:** 20, 22, 24, 26, 28, 30, 32, 34, 36, 38 **MSRP:** \$34.99

**Colors:** Speedo Black 001, Speedo Blue 431, Speedo Navy 434



# TEAM PARKA

NEW COLORS

Outer: 100% Polyester/Inner: 100% Polyester Fleece

Features: Water resistant outer | Fleece lined for warmth | Fleece lined pockets w/zippers | Internal zipper pocket | 2-way front zip | Interchangeable color zipper pulls



Adult (Unisex): SP7201306      Sizes: XXS, XS, S, M, L, XL      MSRP: \$125

Colors: Speedo Black 001, Navy 412, Speedo Blue 431, Speedo Red 601, Speedo Maroon 608

# COLOR BLOCK PARKA

NEW COLORS

Outer: 100% Polyester/Inner: 100% Polyester Fleece

Features: Water resistant outer | Fleece lined for warmth | Fleece lined pockets w/zippers | Internal zipper pocket | 2-way front zip | Interchangeable color zipper pulls



Adult (Unisex): SP7201606      Sizes: XXS, XS, S, M, L, XL      MSRP: \$150

Colors: Speedo Black 001, Speedo Green 320, Navy 412, Speedo Blue 431, Speedo Purple 502, Speedo Red 601, Speedo Orange 847, Red/White/Blue 985

BULLETHEAD SNORKEL

**Features:** Engineered with the most hydrodynamic features, the Bullethead Snorkel is low profile, and ideal for swimmers looking for stability in their training snorkel | Low profile shape offers improved vision and reduced drag | Premium silicone head strap is adjustable for perfect fit and split for consistent comfort | Tear drop shape enhances stability and increases aerobic capacity | Streamlined design keeps snorkel in place for all swim strokes and flip turns

**Style:** SP7530477      **MSRP:** \$34.99

**Colors:** Shocking Lime 386 , Charcoal 010



ADVANCED TECHNOLOGIES

- 

**LOW PROFILE SHAPE**  
Offers maximum vision and drag reduction.
- 

**PREMIUM SILICONE HEADSTRAP**  
With a split strap design for stability and comfort.
- 

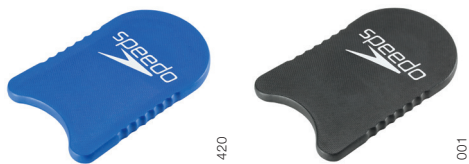
**TEAR-DROP SHAPE**  
Enhances stability as the snorkel cuts through the water.

TEAM KICKBOARD

**Features:** Optimum buoyancy so arms can rest comfortably while swimmers isolate their kick | Textured EVA created a non slip surface | Injection EVA increases durability, giving the team kickboard extended life and optimal performance during training

**Style:** SP7753005      **MSRP:** \$19.99

**Colors:** Blue 420 , Speedo Black 001, Shocking Lime 322

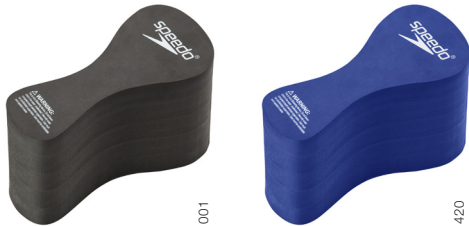


TEAM PULL BOUY

**Features:** Allows the swimmer to focus on stroke technique and rotation | Improves upper body strength | EVA Foam

**Style:** SP7753023      **MSRP:** \$14.99

**Colors:** Speedo Black 001, Blue 420





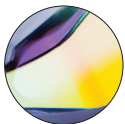


## ADVANCED TECHNOLOGIES



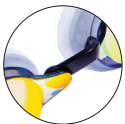
### HYDROSCOPIC CURVED LENS

Classic Speed Socket fit with increased peripheral vision.



### MIRRORED LENS

The mirrored lens reduces glare and brightness.



### HIGH NOSE BRIDGE

Choice of 3 nose-bridge sizes for optimized fit.

## SPEED SOCKET COLLECTION

NOW IN POLARIZED

# SEE THE WIN

The iconic Speed Socket goggle has evolved! Now part of the Fastskin family, this swim goggle retains the classic Speed Socket fit, but now offers increased peripheral vision so you can keep a closer eye on the competition. The mirrored lens reduces glare and brightness, while a double head strap ensures a secure fit, allowing you to concentrate on getting the most out your swim.

## SPEED SOCKET 2.0 MIRRORED

**Features:** Mirrored coating reduces glare | High nosebridge | Curved panoramic lenses | 3 Nosepiece options | Ultra low profile frame

**Style:** SP7750204

**MSRP:** \$34.99



**Colors:** 113 Vapor, 810 Dragon Fire Orange, 426 Dazzling Blue, 429 Blu/Rd Gry/Grym, 620 Fiery Red, 690 White/Pink, 711 Deep Gold, 985 Black/Silver, 986 Smoke Ice

## SPEED SOCKET 2.0

**Features:** Silicone double headstrap ensures a secure fit | Anti-fog lenses offer outstanding clarity | Wide panoramic vision | Hypo-allergenic comfort seals

**Style:** SP7750205

**MSRP:** \$29.99



**Colors:** Black/Clear 104, White/Black 105, Speedo Red 601



113



810



426



429



620



690



711



985



986



105





## ADVANCED TECHNOLOGIES



### ICONIC SLEEK, LOW PROFILE FIT

Ultra low-profile with soft silicone gaskets that provide a comfortable, low-drag, leak-free fit.



### PANORAMIC LENS

Lens design provides greater peripheral vision to keep eyes on the competition.



### ANTI FOG LENS WITH UV PROTECTION

Protection from the sun's harmful UVA and UVB with fog resistant coating.

## VANQUISHER COLLECTION

# VANQUISH THE COMPETITION

Get the competitive edge with the Vanquisher 2.0 or EV Swim Goggle. Superior visibility, hydrodynamic profile, and a reliable fit eliminate distraction, so you can focus on the finish line. The Vanquisher is America's favorite racing goggle. More Speedo Vanquisher goggles are sold in the USA than any other goggle. Period.

## VANQUISHER 2.0 MIRRORED

**Features:** America's #1 Racing Goggle Has Evolved. | Widest Panoramic Lenses. | Up To 20% More Vision Than Vanquisher 2.0. | Ultra Low-Profile Racing Frame. | 4 Nose Piece Options.

**Style:** SP7750127

**MSRP:** \$21.99



**Colors:** Black/Amber 005, Black/Jade 007, Silver 040, Key Lime 353, Blue Thunder 414, Blue 420, Horizon Blue 476, Deep Purple 500, Speedo Red 601, Deep Gold 711, Gold/White 720, Rainbow/Grey 977



## VANQUISHER 2.0

CORE

**Features:** Wide Panoramic Lens. | Cushioned Silicone Seals. | 4 Nosepiece Options.

**Style:** SP7750128

**MSRP:** \$18.99



**Colors:** Clear 104, Smoke 030, Blue 420, White 100





## PREFLEX PADDLE

# POWER + PRECISION

Innovative flexion. Superior performance. The Preflex Paddle can be used by swimmers of all levels to help improve stroke technique, thanks to a hinge design that initiates catch and by promoting fingertip flexion to achieve proper positioning.



BECCA MEYERS

OLYMPIAN  
WORLD CHAMPION

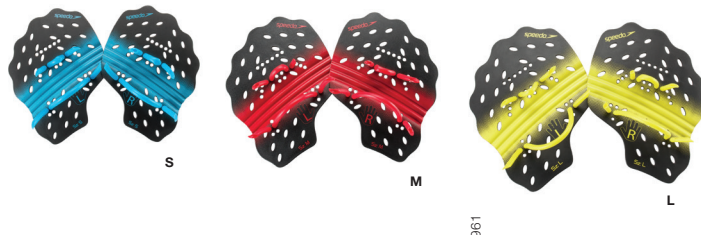
### PREFLEX PADDLES

**Features:** Middle hinge in paddle enhances the catch of swimmers, a new and innovative approach to help swimmers with stroke technique | Three sizes with varying thicknesses to accommodate all ages and abilities | Initiates the fingertips in the beginning of your stroke cycle, helping swimmer naturally raise elbow/forearm into proper technique

**Style:** SP7753097

**MSRP:** \$21.99

**Colors:** \*Multi 961



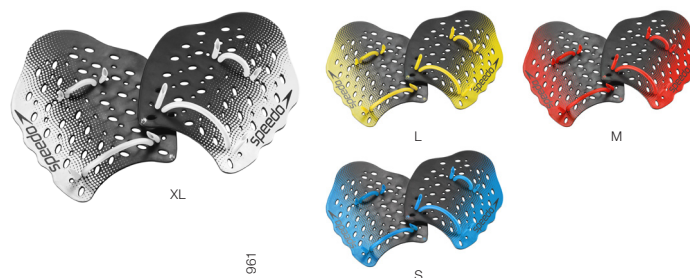
### POWER PADDLE PLUS

**Features:** Wide surface area allows swimmers to have control and feel complete resistance throughout stroke cycles | Thick durometer to withstand the strongest of swimmers throughout multiple seasons | Easily removable straps for sizing changes | all-purpose training paddle for strength gains in all strokes

**Style:** SP7753019

**MSRP:** \$19.99

**Colors:** Multi 961







## ADVANCED TECHNOLOGIES



### PROPULSION

**10% Integrated Blade Angle** Maximizes distance and promotes a proper kick cycle.

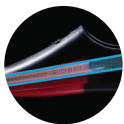
#### Delta Whip Drive (DWD)

Integrated dual durometers optimize blade flexibility.



### FIT

Flex point markers expand to support foot's contour shape. Extended toe box comfortably fits a variety of foot sizes.



### STABILITY

Sculpted side rails engage hip rotation and downkick drive. Blade shape targets optimum kicking surface area.

## SWITCHBLADE FIN

# A NEW ANGLE ON TRAINING

The fin that every swimmer has been asking for! Engineered with a 10° blade angle to provide maximum stability and engagement throughout kick cycle. Allows swimmers to increase kick cadence with ease and fluidity, without inhibiting their stroke technique.

## SWITCHBLADE FIN

**Features:** 10 degree blade angle maximizes down kick segment, creating propulsion | Sculpted side rails engage hip rotation and down-kick drive | Extended toe pocket allows for ultimate comfort | Mid-foot flex points to eliminate cramping | Allows swimmers to increase kick cadence with ease and fluidity

**Style:** SP7753064

**MSRP:** \$34.99

**Colors:** Black/Red 972



3XS: (Youth 1–2)  
2XS: (Youth 2–3)  
XS: (Youth 4–5, US Women 5–6)  
S: (Youth 6–7, US Women 7–8)  
M: (US Men 7–8, US Women 9–10)  
L: (US Men 9–10, US Women 11–12)  
XL: (US Men 11–12)  
2XL: (US Men 13–14)

972

# TEAMSTER 2.0

NEW

DURABLE EXTERIOR SHELL IS BUILT TOUGH WITH ABRASION RESISTANCE  
| PRIMARY ZIPPERS ARE THE HIGHEST QUALITY YKK® ZIPPERS | WEBBING  
LOOPS AND D-RING ON SIDE PANELS FOR ACCESSORIES/BAG TAGS |  
HIDDEN FRONT VENTILATED GEAR POCKET FOR WET SUITS, CAPS,  
AND GOGGLES

STYLE: SP7752025

MSRP: \$69.99

SIZE: 35L

COLORS:

SPEEDO BLACK 001, WHT/BLACK 105, SPEEDO GREEN 320, LIME 322, NAVY/YELLOW  
413, BLUE/GREEN 421, SPEEDO BLUE 431, SPEEDO NAVY 434, BLUE HAWAII 433,  
SPEEDO PURPLE 502, SPEEDO RED 601, SPEEDO MAROON 608, PINK 660, SPEEDO  
YELLOW 722, SPEEDO ORANGE 847, RED/WHITE/BLUE 985



001



105



320



322



413



421



431



434



433



502



601



608



660



722



847



985



# VENTILATOR MESH EQUIPMENT BAG

MEDIUM-SIZED EQUIPMENT BAG DESIGNED TO HOLD ALL YOUR SWIMMING ESSENTIALS | OPEN WEAVE MESH FOR STRENGTH AND QUICK DRYING | DRAWSTRING CLOSURE KEEPS ITEMS TOGETHER AND SECURE IN BAG | EXTERIOR ZIP POCKET

**STYLE:** SP7520119 **MSRP:** \$15.50

**SIZE:** 35L

**COLORS:**

001 SPEEDO BLACK, 052 FROST GREY, 342 JASMINE GREEN, 425 BL GRIT, 426 INSIGNIA BLUE, 427 IMPERIAL BLUE, 552 PRISM VIOLET, 644 FRML ONE, 674 FUCHSIA PURPLE, 733 BLZ YELLOW, 834 BRIGHT MARIGOLD



001



052



342



425



426



427



552



674



644



733



834

**NOT SEEING WHAT YOU NEED? SEE OUR FULL CATALOG HERE.**  
PERIAL BLUE, 552 PRISM VIOLET, 644 FRML ONE